

**Dual Pressure Switching** High Pressure Type  
**PDSJ1100/K930LDP**

Working pressure & Free air delivery: **20bar, 29.7m<sup>3</sup>/min / 25bar, 25.5m<sup>3</sup>/min**



## Main Features

- ◆ Oil fence mounted “Leak Guard” type. Prevent as much as possible outflow of oil etc.
- ◆ Dual pressure selection feature is suitable for wide range of application such as drilling, mining, foundation, well digging and oil & gas by optimizing pressure & air flow to fulfill job requirement.
- ◆ Newly adopted touchscreen control panel with rich information for viewing and easy to operate.
- ◆ Perform auto warming up after engine is started before transferring to loading mode.
- ◆ Perform cooling down operation automatically before engine shut down.
- ◆ Equipped with Purge Operation Mode to enhance energy saving during unload operation.
- ◆ Coupled with Japan Komatsu engine which has low failure rate, stable performance and JPN Stage 3 emission standard.
- ◆ Tally with Low Noise Construction Machinery which recognized by Japan MLIT.



## Safety Devices

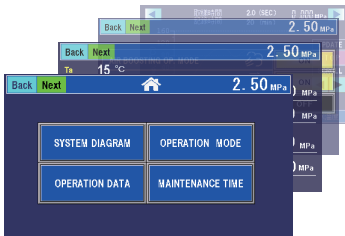
### Warning Alarm

- Stage 1 , 2 discharged air temp. increase
- Oil separator discharged air temp. increase
- Ambient temp. increase
- Ambient temp. sensor open/short circuit
- Engine water temp. increase
- Oil separator pressure difference increase
- Engine air filter clogged
- Compressor air filter clogged
- Notification of filters replacement
- Fuel level low

### Emergency Shutdown

- Stage 1 , 2 discharged air temp. too high
- Temperature sensors open/short circuit
- Coolant level too low
- Engine water temp. too high
- Engine oil pressure too low
- Engine speed too low
- Receiver tank pressure too high
- Oil separator discharged air temp. too high
- Fuel level too low
- Rubber coupling protection
- Starting failure

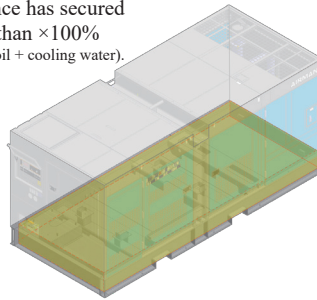
### Touch Panel Display



You can check various information such as operating status, various settings, alarms, abnormalities, and failure records.

### Leak Guard Type

Space capacity of the oil fence has secured more than ×100% (fuel + oil + cooling water).



### Forklift slot



Easy to carry and transport. Two-tier stacking is possible.

## SPECIFICATION

Model	<b>PDSJ1100/K930LDP-5C5</b>		
<b>● COMPRESSOR</b>			
Type	Rotary Twin Screw, Two-Stages, Oil-cooled		
Operating Pressure	MPa	2.0	2.5
Free Air Delivery	m <sup>3</sup> /min	29.7	25.5
Compressor Oil Capacity	L	98	
Air Outlets	2"×1pc, 3/4"×1pc		
<b>● ENGINE</b>			
Maker/Model	KOMATSU SAA6D125E-5-C		
Type	Direct-injection, Turbo-charger, Intercooler		
Total Displacement	L	11.04	
Rated Output	kW(PS)/rpm	282.9 (384.6) / 2,100	
Designated Emissions Regulation	JPN Tier 3		
Fuel Tank Capacity	L	710	
Fuel economy (At 70% load)	L/hr	55.0	51.0
Lubrication Oil Capacity	L	41	
Coolant amount	L	69	
Battery	170H51×2		
<b>● DIMENSION &amp; WEIGHT</b>			
Overall Length×Width×Height	mm	4,300×1,850×1,900	
	(inch)	(192.9×82.7×98.4)	
Dry Weight	kg	5,080	
Wet Weight	kg	5,850	
<b>● Emission, Noise</b>			
Sound power level in decibels (L <sub>WA</sub> )	dB(A)	102	

# AIRMAN®

## HOKUETSU INDUSTRIES CO., LTD.

8th Floor Shinjuku San-Ei Bldg,  
22-2 Nishi-Shinjuku 1-Chome, Shinjuku-ku, Tokyo 160-0023 Japan  
Tel: 81-3-3348-7281 Fax: 81-3-3348-7289  
E-mail: airman.oversea@airman.co.jp  
http://www.airman.co.jp

## AIRMAN ASIA SDN. BHD.

Suite A-8-2, level 8, Block A, Sky Park @ One City,  
Jalan USJ 25/1, 47650 Subang Jaya, Selangor, Malaysia  
Tel: 60-3-5036-7228 Fax: 60-3-5036-7226  
E-mail: sales@airman-asia.com

## HOKUETSU INDUSTRIES EUROPE B.V.

Aalsmeerderdijk 156, 1438 AX Oude Meer, The Netherlands  
Tel: 31-20-6462636 Fax: 31-20-6462191  
E-mail: info@hokuetsu.nl

## AIRMAN USA CORPORATION

95 International PKWY, Suite 100, Adairsville, GA 30103  
Tel: 1-678-800-7070 Fax: 1-770-769-4335



### SAFETY

- Operate safely in accordance with proper operation manual.
- To prevent trouble and accidents, perform daily and preventive maintenance checks without fail.



ISO9001 : JQA-0581  
ISO14001 : JQA-EM4670