

Dual Pressure Switching High Pressure Type **PDSJ1550DP**

Working pressure & Free air delivery: **20bar, 42.5m³/min / 17bar, 43.9m³/min**



Main Features

- ◆ Newly designed Air-end that maximizing free air delivery improves productivity effectively.
- ◆ Dual pressure switching feature is suitable for wide range of application such as drilling, mining, foundation, well digging and oil & gas by optimizing pressure & air flow to fulfill job requirement.
- ◆ Machine provided with “ECO mode” and “Auto ECO mode” which economize fuel consumption and reduce running cost. Additionally, Manual & Auto Purge Operation Mode are able to enhance energy saving during unload operation.
- ◆ Newly adopted touchscreen control panel with rich information for viewing and easy to operate.
- ◆ Perform auto warming up after engine is started before transferring to loading mode.
- ◆ Perform cooling down operation automatically before engine shut down.
- ◆ Equipped with Purge Operation Mode to enhance energy saving during unload operation.
- ◆ Coupled with Japan Komatsu engine which has low failure rate, stable performance and JPN Stage 3 emission standard.
- ◆ Tally with Low Noise Construction Machinery which recognized by Japan MLIT.



HOKUETSU INDUSTRIES CO., LTD.

Safety Devices

Warning Alarm

- Stage 1 , 2 discharged air temp. increase
- Oil separator discharged air temp. increase
- Ambient temp. increase
- Ambient temp. sensor open/short circuit
- Engine water temp. increase
- Oil separator pressure difference increase
- Engine air filter clogged
- Compressor air filter clogged
- Notification of filters replacement
- Fuel level low

Emergency Shutdown

- Stage 1 , 2 discharged air temp. too high
- Temperature sensors open/short circuit
- Coolant level too low
- Engine water temp. too high
- Engine oil pressure too low
- Engine speed too low
- Receiver tank pressure too high
- Oil separator discharged air temp. too high
- Fuel level too low
- Rubber coupling protection
- Starting failure

SPECIFICATION

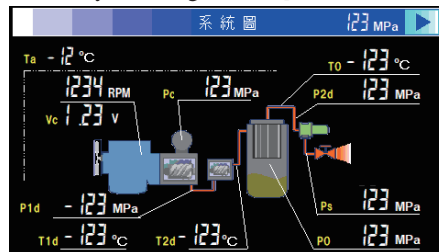
Model	PDSJ1550DP-4C6		
● COMPRESSOR			
Type	Rotary Twin Screw, Two-Stages, Oil-cooled		
Operating Pressure	MPa	2.0	1.7
Free Air Delivery	m ³ /min	42.5	43.9
Compressor Oil Capacity	L	150	
Air Outlets	2"×1, 3/4"×1		
● ENGINE			
Maker/Model	KOMATSU SAA6D140E-5		
Type	direct injection type, inter-cooler, turbocharger		
Total Displacement	L	15.24	
Rated Output	PS(kW)/rpm	568 (418) / 2,000	
Designated Emissions Regulation	JPN Tier 3		
Fuel Tank Capacity	L	902	
Fuel economy (At 70% load)	L/hr	87.2	84.0
Lubrication Oil Capacity	L	61	
Coolant amount	L	75	
Battery	225H52×2		
● DIMENSION & WEIGHT			
Overall Length×Width×Height	mm	4,900×2,100×2,500	
	(inch)	(192.9×82.7×98.4)	
Dry Weight	kg	7,510	
Wet Weight	kg	8,500	
● Emission, Noise			
Sound power level in decibels (LwA)	dB(A)	104	

Operation mode



ECO : Unload rotation speed 1200min⁻¹
 ECO_AUTO : Transfer to ECO mode automatically when unload
 POWER : Unload rotation speed 1500min⁻¹

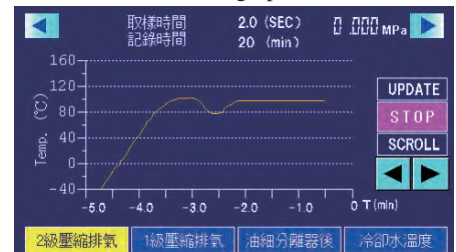
System diagram (Compressor side)



Able to monitor pressure and temperature of air, lubricant and coolant of the machine.

(Above picture is for reference only)

Trend graph



Each parameter will be recorded from 20 minutes before emergency shutdown and alarm history will make troubleshooting easier. Data can be transferred to CSV format via USB port.

AIRMAN®

HOKUETSU INDUSTRIES CO., LTD.

8th Floor Shinjuku San-Ei Bldg,
 22-2 Nishi-Shinjuku 1-Chome, Shinjuku-ku, Tokyo 160-0023 Japan
 Tel: 81-3-3348-7281 Fax: 81-3-3348-7289
 E-mail: airman.oversea@airman.co.jp
 http://www.airman.co.jp

AIRMAN ASIA SDN. BHD.

Suite A-8-2, level 8, Block A, Sky Park @ One City,
 Jalan USJ 25/1, 47650 Subang Jaya, Selangor, Malaysia
 Tel: 60-3-5036-7228 Fax: 60-3-5036-7226
 E-mail: sales@airman-asia.com

HOKUETSU INDUSTRIES EUROPE B.V.

Aalsmeerderdijk 156, 1438 AX Oude Meer, The Netherlands
 Tel: 31-20-6462636 Fax: 31-20-6462191
 E-mail: info@hokuetsu.nl

AIRMAN USA CORPORATION

7633 Adairsville Hwy Adairsville, GA 30103
 Tel: 1-770-769-4241 Fax: 1-770-769-4335



SAFETY

- Operate safely in accordance with proper operation manual.
- To prevent trouble and accidents, perform daily and preventive maintenance checks without fail.



ISO9001 : JQA-0581
 ISO14001 : JQA-EM4670